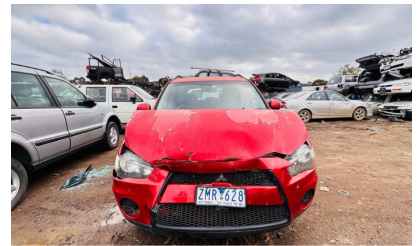


2010 MITSUBISHI OUTLANDER 4DOOR WAGON 2.4 PETROL AUTOMATIC

6 Bormar Drive Pakenham Victoria 3810
sales@europeanspareparts.com.au
Phone : 03 5943 9100
Web : <https://europeanspareparts.com.au/>



03 5943 9100

0480 095 813

listing Summary

Published : Aug 27, 2024

listing Description

The 2010 Mitsubishi Outlander is a great choice for those seeking versatility, comfort, and reliability. This SUV is perfect for both city drives and family adventures, offering a spacious interior, smooth handling, and the durability Mitsubishi is known for. It also includes essential safety features for added peace of mind.

Why Choose Our Parts:

- **Perfect Fit:** High-quality, precise parts for your Outlander.
- **Wide Selection:** Find everything from engine to interior parts.
- **Expert Support:** We're here to help with your parts needs.

We provide perfectly fitting, reliable parts with a wide selection to cover all your needs, backed by expert support to ensure your vehicle continues to run smoothly.

Specialties

The 2010 Mitsubishi Outlander offers a perfect balance of style, performance, and innovation. This SUV features cutting-edge technology and a sleek design, providing a comfortable and safe driving experience. With a powerful engine and advanced safety features, the Outlander is built for those who value both performance and reliability.

Body

MITSUBISHI

Brand

OUTLANDER

Made In

2010

Fuel Type

PETROL

Year

2010

Drive Type

Front-Wheel Drive

Condition

Used

Transmission

AUTOMATIC

Door

4

Cylinder

4-cylinder

Color

Red

No. of Seats

5

Facebook

<https://www.facebook.com/europeanspareparts?>

Instagram

<https://www.instagram.com/euro.specialistparts/>

Make

Mitsubishi

Series

(2006-2010)